

finesse
FIELDERS PREMIUM PROFILES //

WELCOME

Fieldsers are proud to present five exciting profiles that have been designed to bring a high end look to the roof and walls of your next project.

Whether it's for a conventional roofing application or a bold statement for a feature wall, the Finesse® range injects texture and depth, creating an eye catching finish to your project and transforming monotonous metals to stunning steel designs.

The Fieldsers Finesse® range of architectural façades have been rigorously tested to ensure compliance with Australian Standards for both Cyclonic and non-Cyclonic conditions. Fieldsers unique, full scale, NATA accredited laboratory testing, ensures you can be confident of not only the outstanding visual appeal of the Finesse® range but its performance as well.



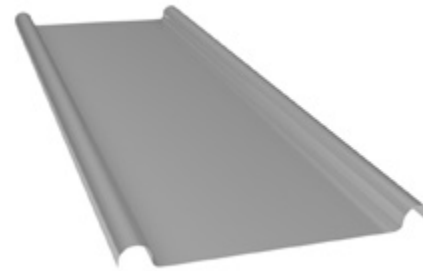
MATERIALS

- COLORBOND® steel
- COLORBOND® Metallic steel
- COLORBOND® Ultra steel
- COLORBOND® Matt steel
- ZINCALUME® steel
- Copper
- Aluminium
- Stainless steel

PROFILES

- Fieldsers Boulevard™
- Fieldsers Shadowline™ 305
- Fieldsers Prominence™
- Fieldsers Neo Roman®
- Fieldsers Grandeur®

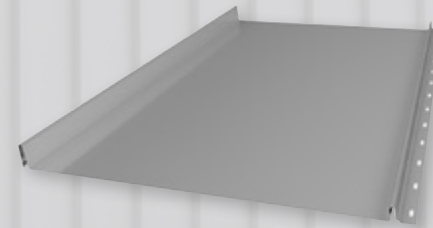
PROFILE OVERVIEW



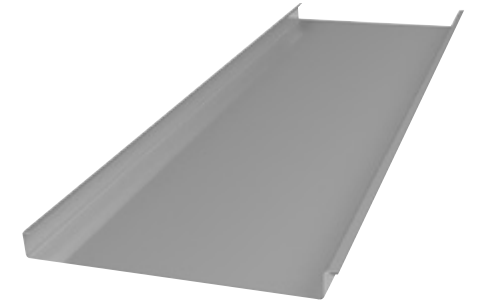
NEO ROMAN®

- Suitable for roof or wall cladding
- Available in up to 4m lengths
- From 275mm to 475mm wide pans
- Down to a 5° pitch

PROMINENCE™



- Suitable for roof or wall cladding
- Flat pans available in 265mm or 465mm widths
- Easy to install
- Can be laid horizontally or vertically
- Tested for application in both Non-Cyclonic and Cyclonic classified regions



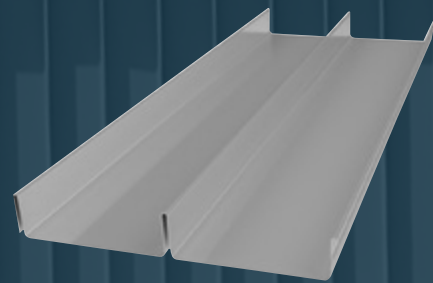
GRANDEUR®

- Suitable for roof or wall cladding
- Curving capacity like no other! It can be curved to a radius of 1.2m in steel
- Can be laid horizontally or vertically
- Tested for application in Non-Cyclonic classified regions

For more information, technical details or user installation guidelines refer to *Fielders Roofing and Walling Manual* available at **fielders.com.au**

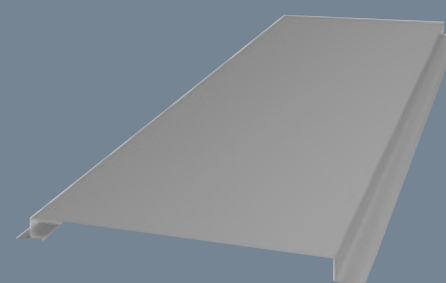
SHADOWLINE™ 305

- Suitable for roof or wall cladding
- Can be laid horizontally or vertically
- Install down to a 1° pitch
- Two pan profile with the ability to be tapered
- Tested for application in both Non-Cyclonic and Cyclonic classified regions



BOULEVARD™

- Suitable for use as wall cladding
- Recessed joints and concealed fix results in a sleek high-end finish
- Flat pans available in 285mm or 485mm widths
- Can be laid horizontally or vertically
- Tested for application in both Non-Cyclonic and Cyclonic classified regions





NEO ROMAN®

Fielders Neo Roman® profile has been around for many years. With the flexibility of a wide range of material finishes, including COLORBOND® steel Metallic and Matt finishes, it is a traditional profile that is equally suited to contemporary designs as well as stately heritage buildings. Most commonly used in Z600 Heritage Galvanised, the distinctive profile can be found in every major Australian capital city thanks to Fielders.



ARCHITECT
Andrew Ladlay
Architect

BUILDER
E Chapman & Sons

CONTRACTOR
Talbot & Lemberg

PRODUCT
1564m² of Z600
Heritage Galvanised
Steel in Neo Roman®



OLD GOVERNMENT HOUSE BRISBANE

Situated in the heart of Brisbane's CBD, cradled by the city's Botanic Gardens and Brisbane River, Old Government House is the most historical building in Queensland.

Recognising this importance, Fielders modified their Neo Roman® profile from a single pan to a two pan profile; precisely duplicating the building's existing profiles. The result is a high quality finish expertly crafted using Fielders unique products.



SHADOWLINE™ 305

As the sunlight changes throughout the day, the distinctive Shadowline™ 305 profile creates depth and movement across the façade. The deep pans and prominent outlines can be installed vertically or horizontally as a wall cladding or can be installed down to a one degree pitch in a roofing application.



ARCHITECT
Thomson Rossi Architects
BUILDER
Hansen Yuncken
CONTRACTOR
Cladding & Roofing Contractors
PRODUCT
2500m² of Shadowline™ 305
COLORBOND® steel Monument®



SOUTH AUSTRALIAN DRILL CORE REFERENCE LIBRARY

Located within Adelaide's newly revitalised Tonsley Precinct, the \$32.2 million South Australian Drill Core Reference Library was designed to bring together more than 7.5 million metres of drill core material.

2,500m² of Shadowline™ 305 was chosen due to the walling profile's sleek and stylish modern look, which melds perfectly with the Tonsley Urban Design Guidelines. Looking for a cladding panel that was rhythmic and evocative of geological formations, Shadowline™ 305 profile was the ideal material for the project, complementing the urban design strategy set out for the site.



PROMINENCE™

With its elegant flat pans and ease of installation, Fields Prominence™ is a rare mix that both the specifier and the builder can appreciate. As with all the profiles in the Fields Finesse® range, Prominence™ is available in any number of finishes including COLORBOND® steel Metallic or Matt.



ARCHITECT
Peter Hunt Architects

BUILDER
BGC Constructions

CONTRACTOR
A B

PRODUCT
180m² of
Prominence™ in
COLORBOND® steel
Woodland Grey®



NATIONAL ANZAC CENTRE WESTERN AUSTRALIA

Fields Prominence™ was chosen to give the building its bold and gallant appearance, while allowing for simple and manageable installation required to achieve the building's opening deadline. The panels were delivered to site and then formed over three different angles, wrapping around the top and the bottom of the building.

180m² of Fields Prominence™ roofing and wall panels in COLORBOND® steel Woodland Grey®, was used as the main focal point for the building's exterior wall.



BOULEVARD™

For all projects that require an uncluttered and smooth look, Fielders Boulevard™ presents the perfect design solution. A contemporary express joint wall cladding that is available in a wide range of colours and finishes, it is sure to enhance the aesthetic appeal of your next project.



ARCHITECT
Loucas Zahos
BUILDER
Datong
CONTRACTOR
Alien Roofing
PRODUCT
900m² of Fielders
Boulevard™ in 0.55BMT,
made in COLORBOND® steel
Monument®



ARIA APARTMENTS ADELAIDE

Located in the heart of Adelaide's buzzing restaurant district, the \$36 million Aria Apartments development on Gouger Street is one of the CBD's newest and most exclusive residential addresses.

Fielders Boulevard™ was chosen by architects, Loucas Zahos, due to its ability to provide a clean and modern finish to the lower exterior of the building. The flat recessed joint of the material was essential in creating a smooth effect that harmonised with the blue-tinted glass façade of the upper levels.



GRANDEUR®

Fields Grandeur® has a unique curving capability not easily achieved with all cladding profiles, allowing for exceptional results. With clean lines for a striking finish, Grandeur® is available in a wide range of colours and finishes to separate your next project from the rest.



ARCHITECT
DC Architecture

BUILDER
DC Architecture

CONTRACTOR
James Henry Roofing

PRODUCT
ZINCALUME® steel
Grandeur®



LORDS HOUSE PROJECT SOUTH AUSTRALIA

The impressive versatility of Fields Grandeur® is perfectly showcased in this project. Asked to recreate the facade of the Press Box at Lords; the Home of Cricket in England, in the Hills of South Australia Fields Grandeur® was the natural choice.

Specified in ZINCALUME® steel Grandeur™ was expertly fixed by a specialist European contractor who emulated the design and helped Fields service another satisfied customer.

For more information on the Fielders
Finesse® range and our case studies
visit fielders.com.au/finesse



Zincalume®

Colorbond®

Colours and materials are subject to availability and minimum order quantities. The gauge will be determined by the dimensions and profiles selected. Contact your local Fielders Architectural representative for technical assistance or phone Fielders Technical Services Group on 1300 995 345.