



# Fielders Steel Door Frames

Architectural and Commercial



The Fielders Steel Door Frame is a strong and durable solution, made from 100% Australian steel by BlueScope. We offer an extensive range of standard sizes and a complete custom manufacture service. Our in-house estimators can do a take off from your plans.

Projects suitable for Fielders Steel Door Frames include:

- Residential buildings.
- High-rise commercial buildings.
- Education, retail and health projects.

Fielders can assist with your next project, through:

- An in-house estimation service for commercial projects. Just send us your plans and we do the rest.
- Technical literature and collateral.

Fielders Steel Door Frames offer a robust, durable and in certain circumstances, a structural solution for any type of project.

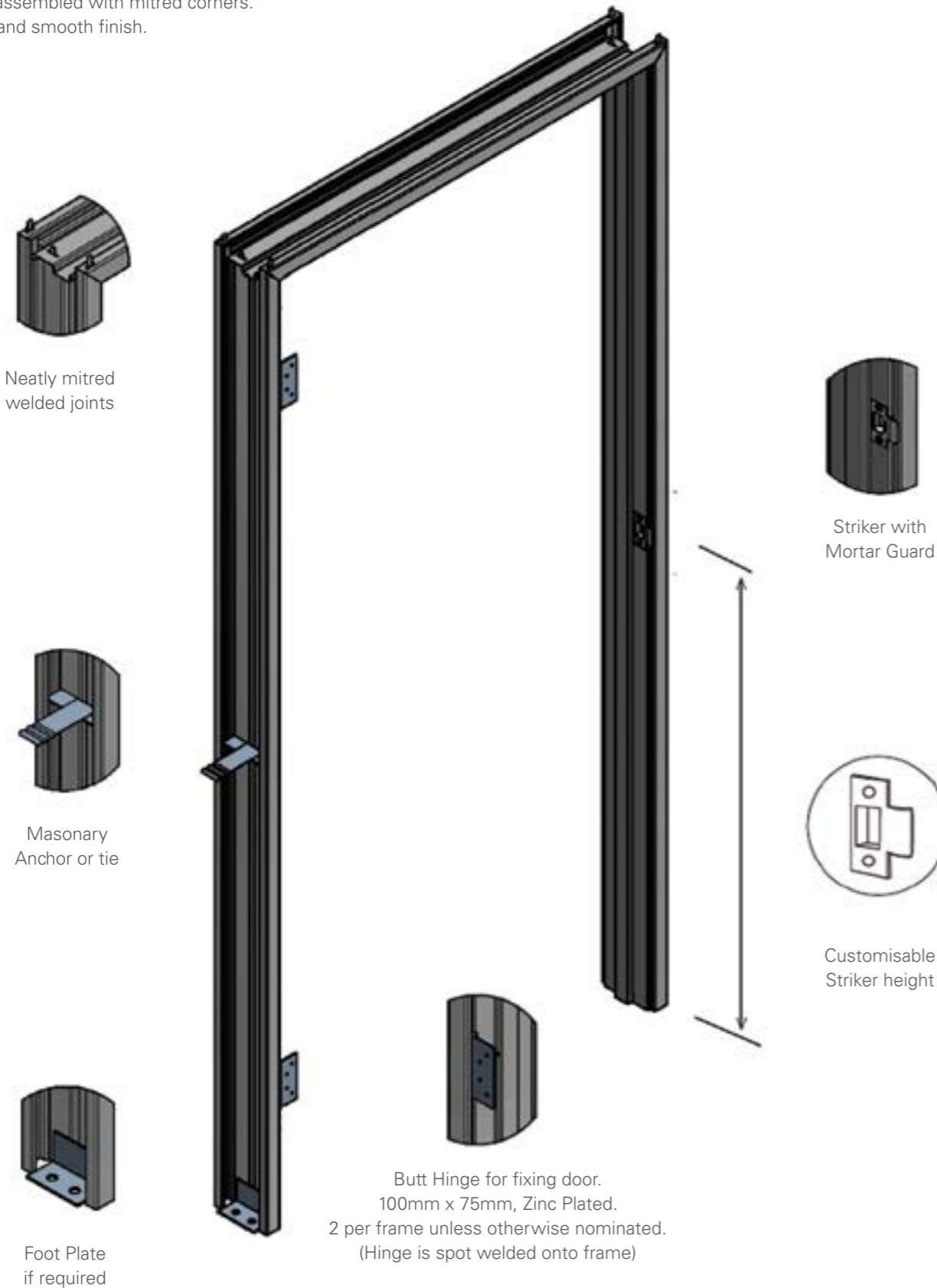
#### **Custom Options**

Fielders Steel Door Frames can be fabricated with the following options:

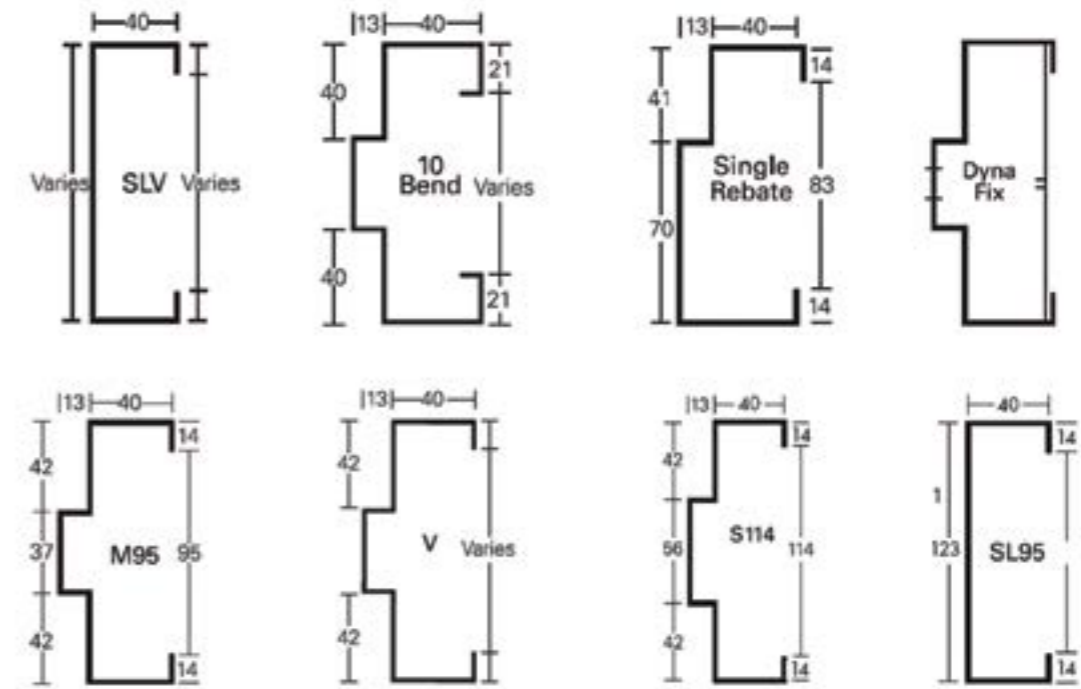
- Screwfix backing plates
- Galvanised Steel
- Stainless Steel
- Provision for electric opening
- Provision for door closers
- Provision for transoms and mullions

## Typical Door Frame Detail

Factory assembled with mitred corners.  
Welded and smooth finish.



## Standard Architectural and Commercial Profiles



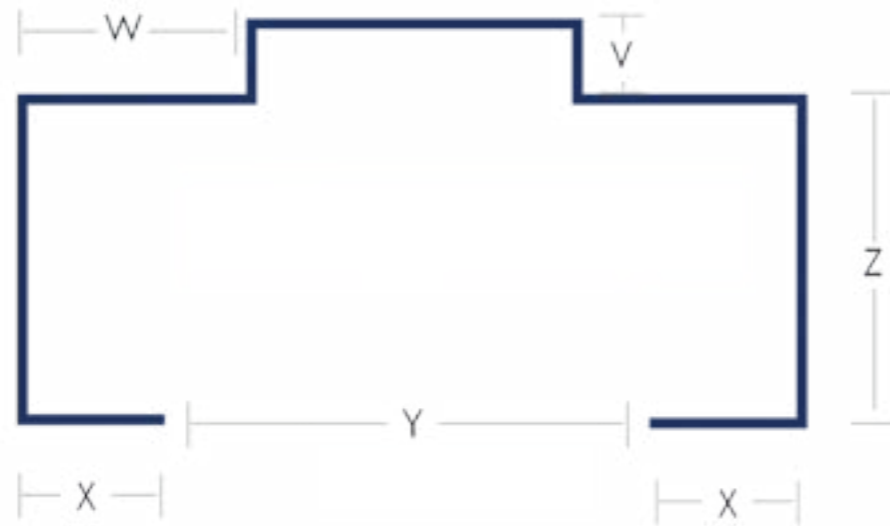
## Standard Door Frame Sizes and Stud Sizes

AUST. STANDARD DOOR SIZE (mm)	DOOR FRAME REVEAL SIZE (mm)*	OVERALL FRAME SIZE (mm)	STUD OPENING SIZE (mm)
<b>SINGLE DOORS</b>			
2040 x 520	2060 x 523	2100 x 603	2080 x 555
2040 x 620	2060 x 623	2100 x 703	2080 x 655
2040 x 720	2060 x 723	2100 x 803	2080 x 755
2040 x 820	2060 x 823	2100 x 903	2080 x 855
2040 x 920	2060 x 923	2100 x 1003	2080 x 955
<b>DOUBLE DOORS</b>			
2040 x 2/520	2060 x 1043	2100 x 1123	2080 x 1075
2040 x 2/620	2060 x 1243	2100 x 1323	2080 x 1275
2040 x 2/720	2060 x 1443	2100 x 1523	2080 x 1475
2040 x 2/820	2060 x 1643	2100 x 1723	2080 x 1675
2040 x 2/920	2060 x 1843	2100 x 1923	2080 x 1875

NOTE: It is recommended to add required clearances to this dimension\*

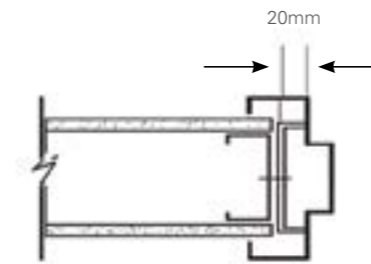
### Frame Dimension Measurements

- X = Flange return
- Y = Back opening
- V = Door stop depth (13mm)
- Z = Architrave
- W = Door rebate

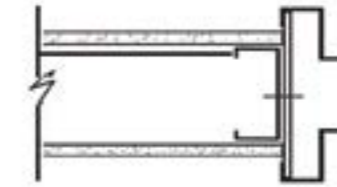


### Stud Fixing Details

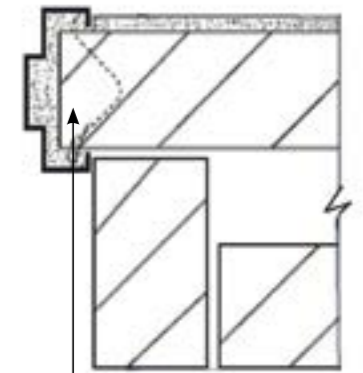
Brick Veneer Wall



Stud channels (welded)

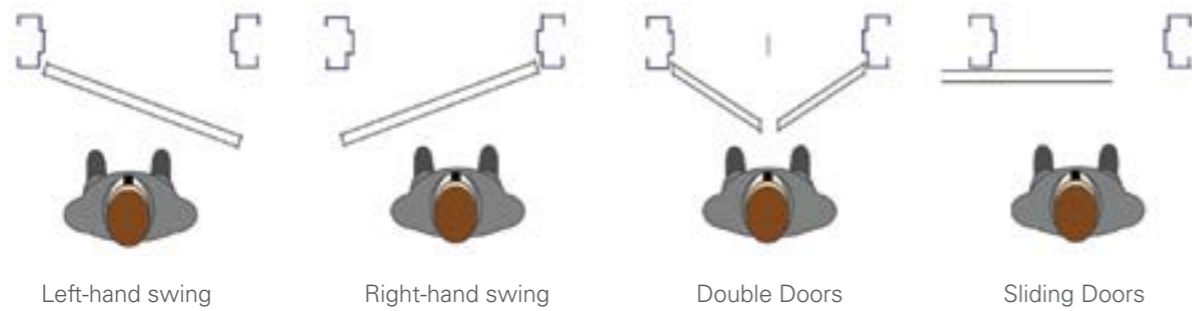


Stud strap (welded)



4mm diameter wire tie  
Closed Cavity Wall

### Selecting the Correct Opening



Left-hand swing

Right-hand swing

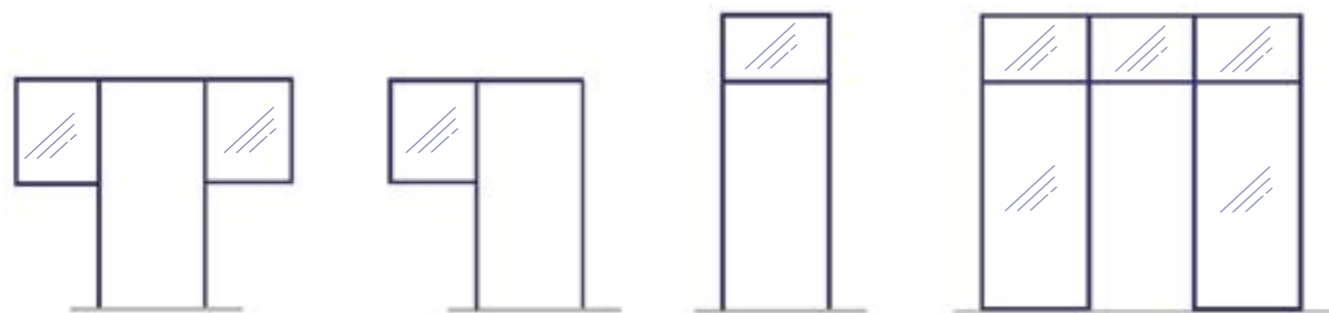
Double Doors

Sliding Doors

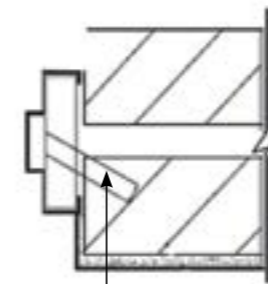
### Transoms and Sidelights

Custom transoms and sidelights can be fabricated as required.

Typical designs:

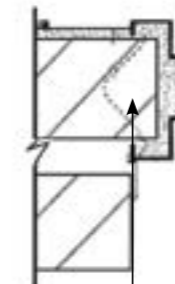


### Masonry Fix details



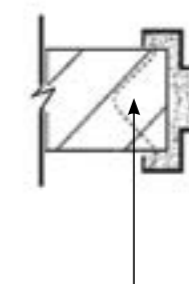
Fielders built-In Corrugated offset strap

Double Brick or Concrete Block wall with Door Frame fitted centrally



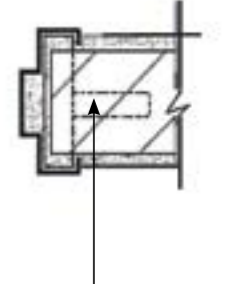
4mm diameter wire tie

Double Brick cavity wall with Plaster inside



4mm diameter wire tie

Single Wall with brick or block



Fielders built-In Corrugated straight strap

Single Wall with brick or block

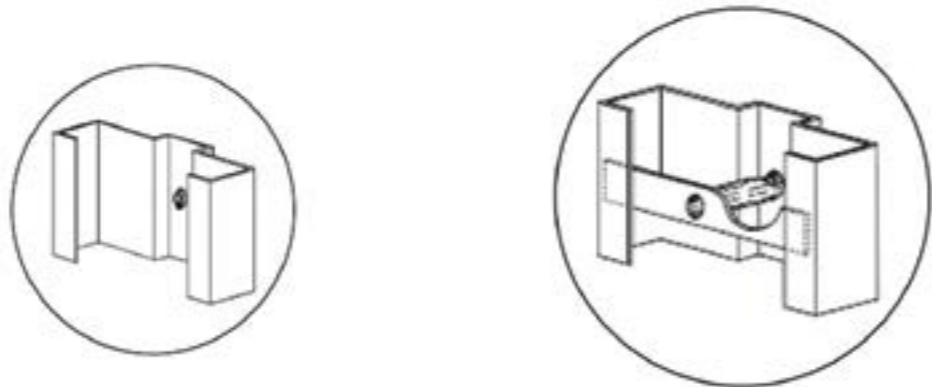
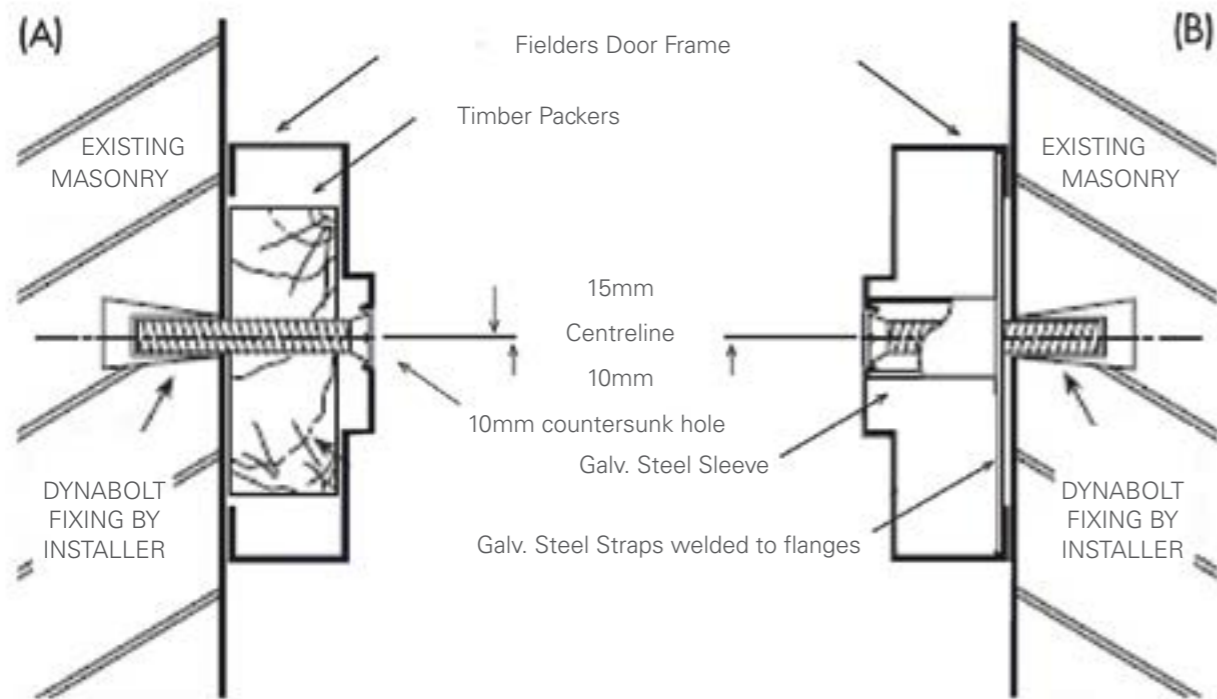
# Steel Door Frames

## C/Sk holes (A)

Into existing masonry

## C/Sk holes (B)

With sleeves and straps into existing masonry



Note: Mortar guards are fitted to all cutouts when using C/Sk holes





## How to Order

### 1. Specify Back Openings

95mm – internal brick walls.  
114mm – single brick external walls or feature brick walls.

### 2. Specify Frame Size Internal Dimensions

When ordering always specify the opening height and width of the opening – eg. 2060mm x 820mm. Fielders will supply a frame with an opening to height and 3mm greater in width.

### 3. Specify Left or Right Hand Side

Always stand with the door opening towards you. The side with hinges is how the hand is determined.



### 4. Hung Doors

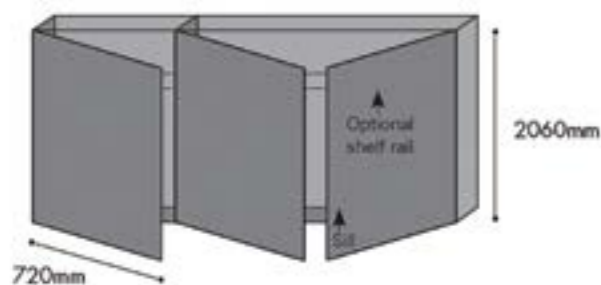
When ordering always specify the total width of the combined opening. For example, a frame to suit two 820mm doors will be specified as 2360mm x 1644mm. If fixing to external double brick walls, a flashing will be required to protect the cavity.

### 5. Robe Frames

Robe features can be specified as:  
Standard height - 2060mm - with other heights available on request.

All door robe frames have a spacing fixed to the bottom sill. Standard height (2060mm) robes have two hinges per door whilst full height robes (2320mm) have three hinges per door. A steel shelf rail is supplied only if requested and is fitted 1700mm above floor level.

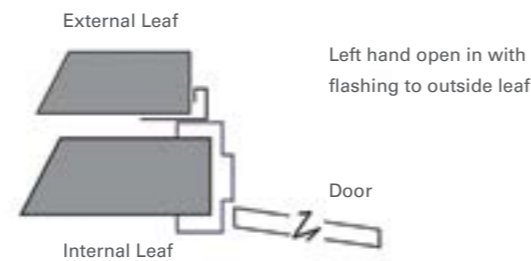
Always state the number of doors required - eg 2060mm x 2/720mm robe. If there is a single door, always state whether it needs to be a left hand or right hand single door.



### 6. External Doors

When ordering an external frame always supply the following information:

- Is the frame left or right hand?
- Is the frame to be fitted to the internal or external brick of the wall?
- Is the door to open in or out?



NOTE: If fixing to external double brick walls a flashing will be required to protect the cavity.

### 7. Toilet Doors

Fielders will fit door frames with lift off hinges. When specifying, identify these openings with the abbreviation "WC" - eg 2060mm x 620mm LH WC.

### 8. Striker Plate Height

Plates are typically located 1000mm from the center to floor level, however these can be customised for commercial frames.

### 9). Standard Abbreviations - GLOSSARY

Hand	RH or LH
Slider	SL
Toilet Doors	WC
No Striker	NS
Double Hung	DH



